

COMMUNION

Comm.
3.
S Cá-pu-lis sú- is * obumbrá- bit tí- bi, et
sub pén- nis é-jus spe- rá- bis : scú- to cir-
cúm-da- bit te vé-ri-tas é- jus.

1ST SUNDAY OF LENT

INTROIT

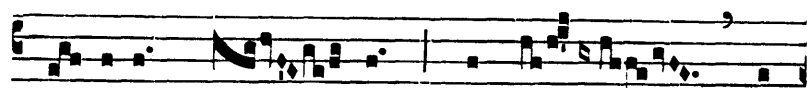
Intr.
8.
I Nvocá- bit me, * et é- go exáu- di- am é- um :
e- rí- pi- am é- um, et glo- ri- ficá- bo é- um :
longi- túdine di- é- rum ad- implé- bo é- um.
Ps. Qui hábi- tat in adjutó- ri- o Altíssimi, * in protecti- óne
Dé- i caéli com- mo- rábi- tur. Gló- ri- a Pátri. E u o u a e.

GRADUAL

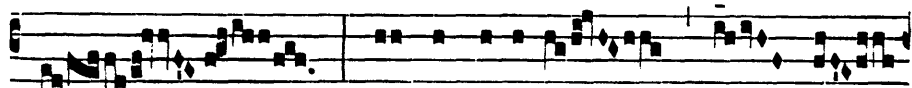
Grad.

2.

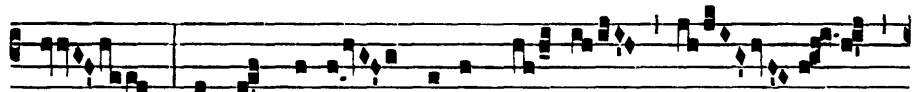
A



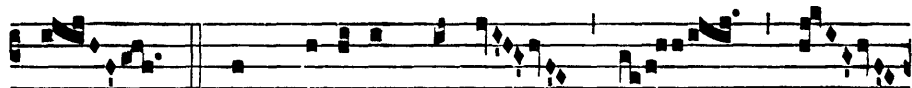
N-ge-lis * sú- is mandá- vit de



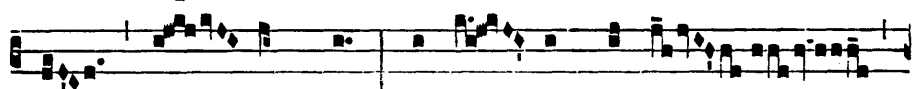
te, ut custódi- ant te



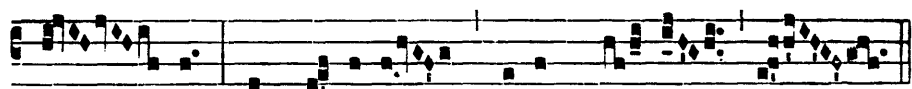
in ómnibus ví- is tú- is.



V. In mánibus portá-



bunt te, ne un-quam offén-



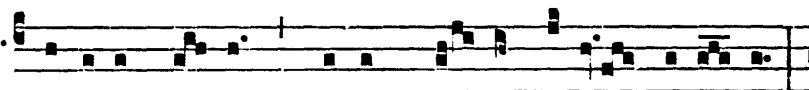
das ad lá-pidem * pédem tú- um.

OFFERTORY

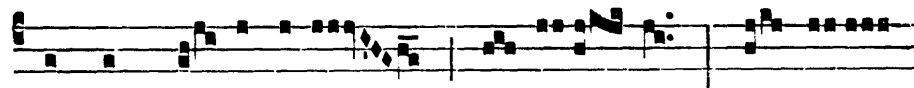
Offert.

8.

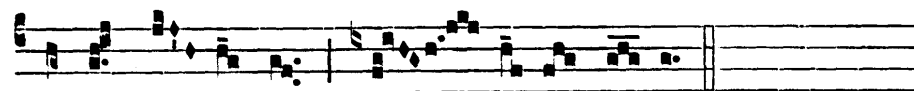
S



Cápu-lis sú- is * obumbrá- bit tí-bi Dómi-nus,



et sub pén-nis éjus spe- rá- bis : scú- to



circúm- da- bit te vé- ri- tas é- jus.

me sperá- vit, libe-rábo é- um :

prótegam é- um, quóni- am cognóvit nómen

mé- um. *∇*. Invocabit me, et é-go exáu-

di- am é- um : cum ípso sum in tri- bu-

la-ti- óne. *∇*. Erípi- am é- um, et glo-

ri- fi-cábo é- um : longi-tú- dine

di- é-rum adimplébo é- um, et ostén-

dam fl- li sa- lu-tá-re * mé-

um.

1ST SUNDAY OF LENT

TRACT

Tract.
2.

Q UI hábi- tat * in adjutó-ri- o Altís-

simi, in protecti-ó- ne Dé- i caé- li

commorá- bi-tur. *∇*. Dícet Dómi- no : Suscé-

ptor mé- us es, et refú- gi- um

mé- um, Dé- us mé- us : spe- rá- bo in é-

um. *∇*. Quóni- am í- pse

li- be- rá- vit me de láque- o ve-nán-

ti- um, et a vérbo á- spero. *∇*. Scápu- lis

sú- is obumbrá- bit tí- bi, et sub pénnis
é- jus spe- rá- bis. *∇*. Scúto circúmda-
bit te vé-ri- tas é- jus : non timé-
bis a timóre noctúr-no. *∇*. A sagít- ta
volán- te per dí- em, a negó- ti- o
perambu- lán- te in té- nebris, a ru- ína
et daemó- ni- o me- ridi- á- no.
∇. Cá- dent a lá- te- re tú- o míl-
le, et décem míl- li- a

a déxtris tú- is : tíbi au- tem non ap-
propinquá- bit. *∇*. Quóni- am Ange- lis sú- is
mandá- vit de te, ut custódi- ant te in
ómni- bus ví- is tú- is. *∇*. In máni- bus por-
tá- bunt te, ne unquam offéndas ad
lá- pidem pédem tú- um. *∇*. Su- per áspi-
dem et ba- sí- lí- scum ambu- lá-
bis, et conculcá- bis le- ó-
nem et dracó- nem. *∇*. Quóni- am in